




### DATES TO REMEMBER

#### Term 3 2021

Monday 12 July to

Friday 17 September

<b>August</b> Wednesday 4	Secondary Placement 2022 confirmation
	100 days of Prep Celebration
Tuesday 10	2.30 School council finance meeting
Tuesday 17	7.00 School council meeting
Monday 23 to Friday 27	<b>Book Fair</b> 8.30am to 8.50am and 3.30pm to 4pm daily.
Monday 23	District athletics Year 3 to 6 selected students
Wednesday 25	 <b>ART SHOW</b>
Friday 27	Prep 2022 Transition day 1
Monday 30	Book week celebration
<b>September</b> Thursday 2	PACC Fathers Day Stall
	Division athletics Selected students
Friday 3	Year 3 & 4 Excursion Melbourne Museum

### FROM THE PRINCIPAL'S DESK

**THANK YOU** so much for making yesterday and this morning's transition back to school so successful. Lockdowns and Remote Learning scenarios are not much fun for anyone, but it was lovely to see the children's smiling faces and to be greeted by a wonderful start of the day.

*As the main risk of introducing COVID-19 to the school environment is from adults, please ensure close proximity between adult members of the school community is avoided, particularly during school drop-off and pick-up.*

Please continue to ensure that all safety measures are followed which includes:

- wearing masks at all times
- using hand sanitiser regularly
- remaining outside of buildings and classrooms
- dropping off your child/ren and then departing quickly
- socially distancing from others and
- QR coding in, if needing to address urgent matters through the school office.

**Following are the current DET guidelines in place for CPS from Wednesday 28<sup>th</sup> July.**

#### Student Arrival

- Classrooms will be open from 8:50am to allow students to be dropped off at school anywhere between 8:45 -9:00am with learning to commence at 9:00am (This will continue to create a staged arrival of students and reduce the bottleneck of families arriving at 9:00am).
- Only Prep parents should be entering the grounds (after QR check-in) for a quick drop-off and good-bye.
- On arrival, the yard duty teacher will direct all students to their line or classroom.
- Students will be considered late if they arrive after 9:00am.

#### Student Dismissal

- All Prep students will be dismissed at 3:20pm - siblings should meet parents outside of the school gate.
- All students and parents will be expected to leave the school grounds by 3:35pm.
- As usual, after school supervision will conclude at 3:45pm. Any students not collected by 3:45pm will be encouraged to go to the office.

## Restricted On Site Access

- As recommended, visitors to school grounds will be limited to those delivering or supporting essential school services and operations.
- Early leavers: If students have an appointment, parents are to inform their child's teacher. Early leavers will be sent to the office foyer at the appropriate pickup time. Unfortunately, parents are unable to pick up their child from their child's classroom.
- Late Arrivals: Students who arrive late to school (after 9:00am) should come the administration building, where their child will be assisted by an office staff member.
- Parents of an unwell child should come to the office where their child will be handed to them by a first aid carer or office staff member. Social distancing practices should always apply including in an extreme medical emergency, where an ambulance might be called.
- Uniform orders will be managed at school with uniform packs sent home with your child.

As flagged on Tuesday night, the additional key summary points as recommended to schools by DHHS and the Department of Education are listed on the following page.

## Child Safety

Clarinda Primary School is committed to the safety and wellbeing of all children and young people. This will be the primary focus of our care and decision-making.

CPS has a commitment to **zero tolerance of child abuse**. We support and respect all children as well as our staff and volunteers. CPS is committed to providing a child safe environment where children and young people feel safe, and their voices are heard when decisions are made that affect their lives.

We are committed to the cultural safety of Aboriginal and Torres Strait Islander children, the cultural safety of children from culturally and/or linguistically diverse backgrounds, and to providing a safe environment for children with a disability.

We want all children at this school to be safe, happy and empowered.

Every person involved in CPS has a responsibility to understand the important and specific role he/she plays individually and collectively to ensure that the wellbeing and safety of all children and young people is at the forefront of all they do and every decision they make.

We have legal and moral obligations, which we follow rigorously, to contact authorities when we are worried about a child's safety.

CPS Child Safety Policies can be viewed on our school website.

Parents can access important information regarding Child Safety via the following link.

<https://www.education.vic.gov.au/parents/safety/Pages/child-protection.aspx>

## Foundation 100 Days of School

Next Wednesday will mark the 100<sup>th</sup> day of school for our Foundation students.



Students will participate in a variety of activities based around the number '100'. Thank you to Mrs Young, Mrs Williams and Mrs Matti for organising the activities on this special occasion!

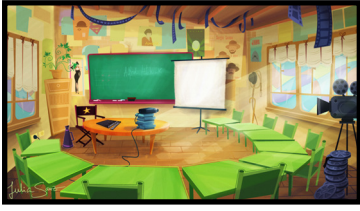
We congratulate all of our wonderful Foundation students and acknowledge the efforts of our amazing Foundation staff who have supported and nurtured our students throughout this early part of their schooling life, literally setting up a solid foundation for their ongoing learning and wellbeing.

## Summary of key operational requirements

<u>COVIDSafe behaviours</u>	
Key actions for schools	All Victorian schools
Temperature checks	<b>NO</b>
Face masks	<b>YES - INDOORS AND OUTDOORS</b>
Working across multiple sites	<b>MINIMISE</b>

<u>Create COVIDSafe spaces</u>	
Key actions for schools	All Victorian schools
COVIDSafe routine cleaning	<b>YES</b>
Enhanced hand hygiene facilities	<b>YES</b>
Enhanced ventilation	<b>YES</b>
Community use of school playground	<b>NO</b> (unless after hours)
Community use of school facilities (indoors and outdoors)	<b>NO</b>
Libraries (for borrowing and as a learning space)	<b>YES</b>

<u>Promote COVIDSafe activities</u>	
Key actions for schools	All Victorian schools
Non-essential visitors	<b>NO</b>
Pre-service teacher placements	<b>YES</b>
Health, wellbeing, inclusion visits	<b>YES</b>
School tours	<b>NO</b>
Excursions	<b>YES</b> (single school only and collection of student contact details)
Swimming and all other pool use	<b>YES</b> (restrictions apply)
Incursions	<b>NO</b>
School photos	<b>NO</b>
Camps and overnight stays	<b>YES</b> (restrictions apply)
Assemblies (whole school and year level), formals, graduations	<b>NO</b>
Kinder transition program	<b>NO</b>
Year 7 transition programs	<b>NO</b>
All sporting activities (indoor, outdoor, contact and non-contact)	<b>YES</b>
Interschool sport	<b>NO</b>
All interschool activities (such as debating)	<b>NO</b>
Music classes Singing, brass and woodwind	<b>YES</b> (If following recommended health advice)
Professional development and staff meetings (face to face)	<b>NO</b>



### Education State Principals' Conference

Mrs Joyce and I will be attending the Education State Principals' Conference next Tuesday 3<sup>rd</sup> August.

This is the first of 2 sessions, which will both be virtual.

The second session is scheduled for September 2<sup>nd</sup>. Some of the speakers will include Professor John Hattie - Laureate Professor, Melbourne Graduate School of Education, University of Melbourne, whose presentation will focus on what we have learnt in education and how can we apply our new learning; and Dr Ben Palmer - CEO GENOS, will present on leading, empowering and thriving with emotional intelligence.

These are but 2 of the many speakers and presentations we are looking forward to participating in and learning from.

Thank you again to everyone for the past few weeks, it has a wonderful effort collectively by our whole community.

Robbie  
Princi-

See you around the school,  
Mallett,  
pal.



NEW

BEANIES \$20

AT THE  
SCHOOL OFFICE

## ESSENTIAL EDUCATION 2021

### TERM 3 PAYMENT NOW DUE

**\$69.25** (YEARS P-2) OR **\$65.00** (YEARS 3 TO 6)

PLEASE PAY USING YOUR BPAY ACCOUNT (on family statement) or  
CONTACT THE SCHOOL OFFICE.

Welcome to the family



1166 Centre Road Clarinda 3169 T: 9544 3231 F: 9543 8839

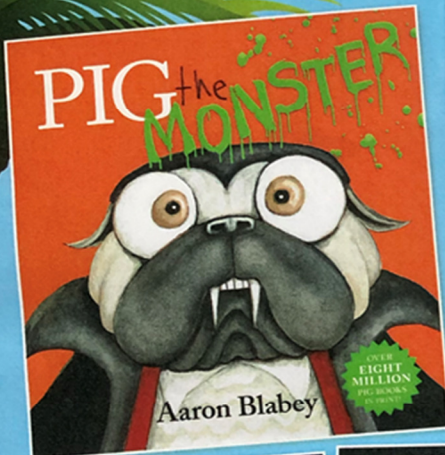
E: [clarinda.ps@edumail.vic.gov.au](mailto:clarinda.ps@edumail.vic.gov.au)

[clarindaps.vic.edu.au](http://clarindaps.vic.edu.au)

SCHOLASTIC  Book Fairs

# You're invited to our Scholastic BOOK FAIR

Reading Oasis: A Cool Place to Discover Hot Books!



Date: 23<sup>rd</sup> August – 27<sup>th</sup> August, 2021 Time: 8:20am – 8:50am / 3:30pm – 4pm

Place: School Library

Special Family Night (Art Show 5pm – 6.30pm)

Carol Mckinley Book Fair Co-ordinator

**LITERACY RESOURCES FOR OUR SCHOOL**

Welcome to the family



1166 Centre Road Clarinda 3169 T: 9544 3231 F: 9543 8839

E: [clarinda.ps@edumail.vic.gov.au](mailto:clarinda.ps@edumail.vic.gov.au)

[clarindaps.vic.edu.au](http://clarindaps.vic.edu.au)

**CLARINDA PRIMARY SCHOOL PRESENTS**

**WEDNESDAY  
25TH AUGUST  
5 - 7PM**

# **2021 ART SHOW**

- SHOWCASE OF STUDENT ARTWORK**
- STUDENT ARTWORK ON SALE FOR \$5 PER PIECE**
- PERFORMANCES BY CLARINDA SINGAS AND ROCK BAND**
- COLLABORATIVE CLASS ARTWORKS SILENT AUCTION**
- FOOD AND BEVERAGES AVAILABLE FOR PURCHASE**
- SCAVENGER HUNT COMPETITION**
- GOLD COIN DONATION ENTRANCE FEE**
- CHECK IN VIA QR CODE**

*Welcome to the family*



1166 Centre Road Clarinda 3169 T: 9544 3231 F: 9543 8839

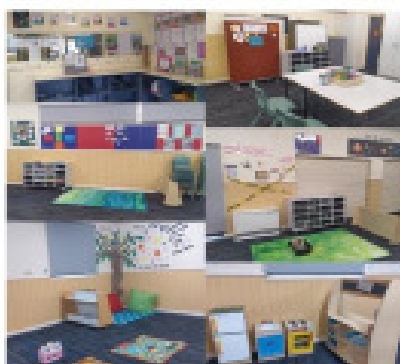
E: [clarinda.ps@edumail.vic.gov.au](mailto:clarinda.ps@edumail.vic.gov.au)

[clarindaps.vic.edu.au](https://clarindaps.vic.edu.au)

# Newsletter

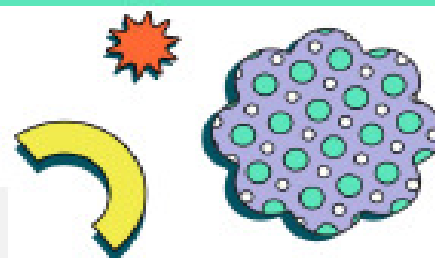
Welcome to Camp Australia Your OSHC at Clarinda Primary School. We design enriching experiences to inspire your children's confidence, independence, and imagination.

We have a very inviting space for children to have various experiences both indoor and outdoor. Educators foster a safe, inclusive environment where children can relax, have fun, build respectful relationships, and grow.



In every before and after school session, we design a featured activity to engage the children. Complementing the feature activity are experience zones that give children the freedom of choice and guide them to learn through play.

We have been involved and engaged in some themed experiences starting this term like UNDER THE SEA, HEALTHY EATING, COMPOSTING and MEETING THE CHICKENS. Though in uncertain times, we are still not stopping ourselves to have fun!!! A few snapshots of our creative minds in action.



Coordinator - Shuba

## Service Information:

Phone No. 0402 353 192

Before School Care:  
6:45am – 8:45am

After School Care:  
3:30pm – 6:30pm

Vacation Care: 7:00am – 6:00pm

Pupil Free Day: 7:00am – 6:00pm

## BSC Routine

6:45am
Garden Walk
Breakfast
7:00am
Planned and Child Initiated Activities
8:00am
Optional Outdoor Play (Weather Permitting)
8:15am
Breakfast/Refreshment
8:30am
Tidy up Space
Indoor Group Games
8:45am
Children Leave for School

## ASC Routine

3:45pm
Garden Walk
Self Directed Group Time
Wash Hands
3:45pm
Healthy Afternoon Snack
Planned and Child Initiated Activities
4:00pm
Optional Outdoor play (Weather Permitting)
4:15pm
Pack up Outside
Wash Hands
4:30pm
Tidy Space
Quiet Activities
4:45pm
Service Close

Your  
OSHC.

To register and book, visit [www.campaustralia.com.au](http://www.campaustralia.com.au)



Welcome to the family



1166 Centre Road Clarinda 3169 T: 9544 3231 F: 9543 8839

E: [clarinda.ps@edumail.vic.gov.au](mailto:clarinda.ps@edumail.vic.gov.au)

[clarindaps.vic.edu.au](http://clarindaps.vic.edu.au)